



seeing beyond™

## **InfoBurst Build 235**

---

### Release Notes

May 30, 2018

#### Version Details

Platform: 2018.5.235, UI: 3.3.25



Table of Contents

Supported Platforms..... 3

What’s new with InfoBurst Build 235? ..... 3

    Tableau..... 3

    XML Data Cache (XDC) ..... 6

    Platform ..... 7

    Users & Group Management ..... 9

    Deliveries..... 10

    Macros ..... 11

Enhancements added to existing features ..... 13

Fixed Issues ..... 16

Known Limitations/Issues ..... 18

## Supported Platforms

InfoBurst Build 235 supports the following software versions

Software	Version
SAP BusinessObjects	<ul style="list-style-type: none"><li>• BI 4.2 (SP02 – SP05)</li><li>• BI 4.1 (SP01 – SP10)</li><li>• BI 4.0 (SP1 – SP9)</li><li>• XI 3.2 (SP1 – SP7)</li></ul>
Tableau	<ul style="list-style-type: none"><li>• Tableau Server 10.3 &amp; Above</li></ul>
Microsoft SSRS	<ul style="list-style-type: none"><li>• 2005 - 2016</li></ul>
Sharepoint	<ul style="list-style-type: none"><li>• 2007 - 2016</li></ul>

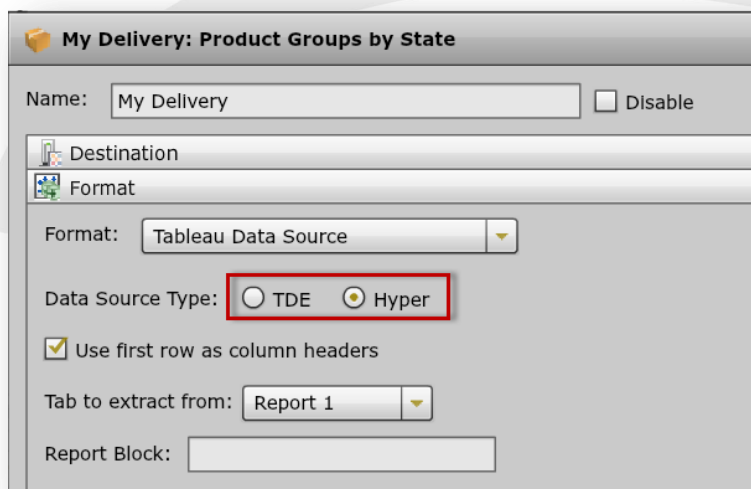
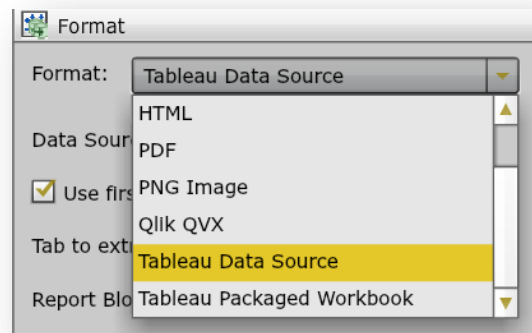
## What's new with InfoBurst Build 235?

The What's new section provides an overview on the new features that have been added to InfoBurst since the previous release. The new features are categorized into following InfoBurst categories

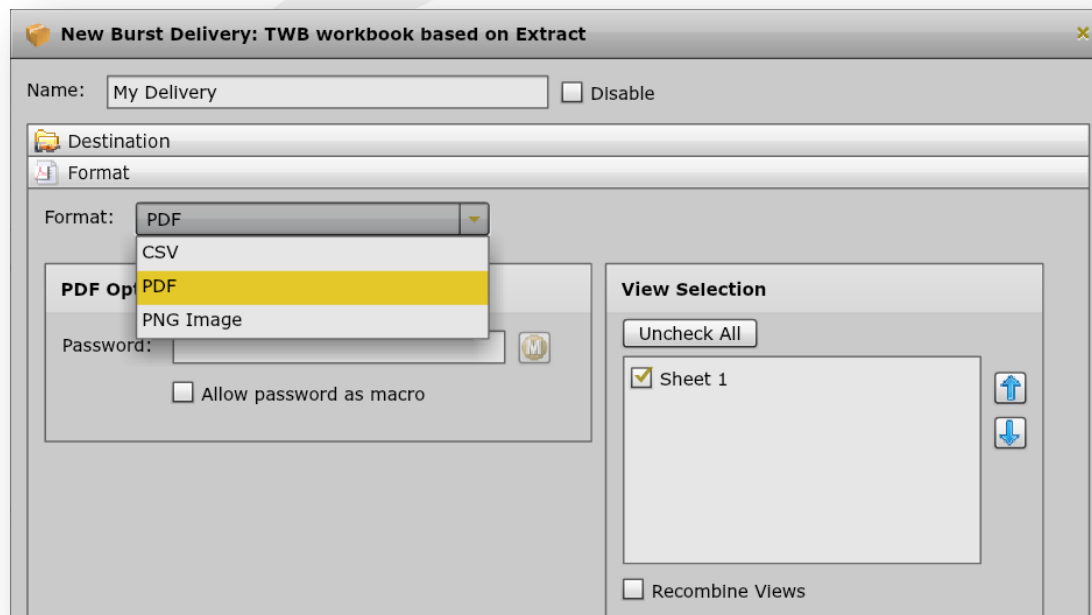
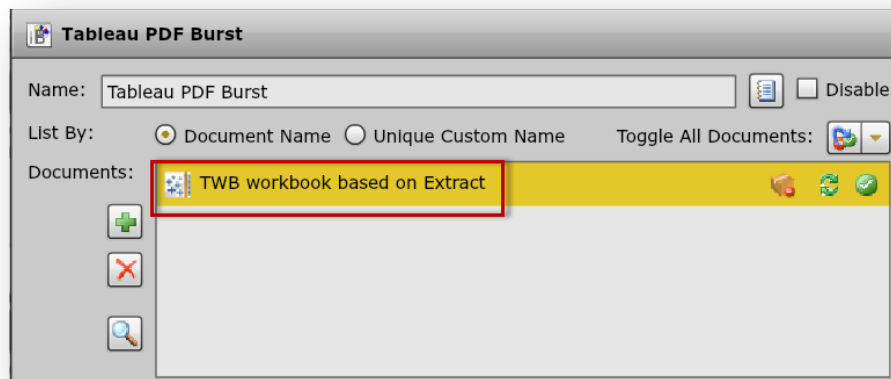
- Tableau
- XML Data Cache (XDC)
- Platform
- Macros
- Deliveries
- User & Group Management

### Tableau

**Support for Tableau's Hyper** - Beginning Tableau 10.5, when you create a new extract, Tableau uses the .hyper format instead of a .tde format. Extracts in .hyper format take advantage of the improved data engine. InfoBurst Build 235 delivers a web intelligence report in .hyper format.



**Distributing Tableau workbook images** – InfoBurst Build 235 allows cataloging of Tableau workbooks (TWB or TWBX) based on extracts. A workbook image can be exported into a PDF, a PNG image or CSV data and distributed to various destinations (Email, Network share, iBPortal etc.). Worksheets, dashboards and stories are all considered as sheets within InfoBurst. Similar to refreshing a web intelligence report, InfoBurst connects to Tableau Server, opens a Tableau workbook, refreshes the data extract connected to the workbook, captures the latest image/data from the workbook and distributes it to the selected destination.

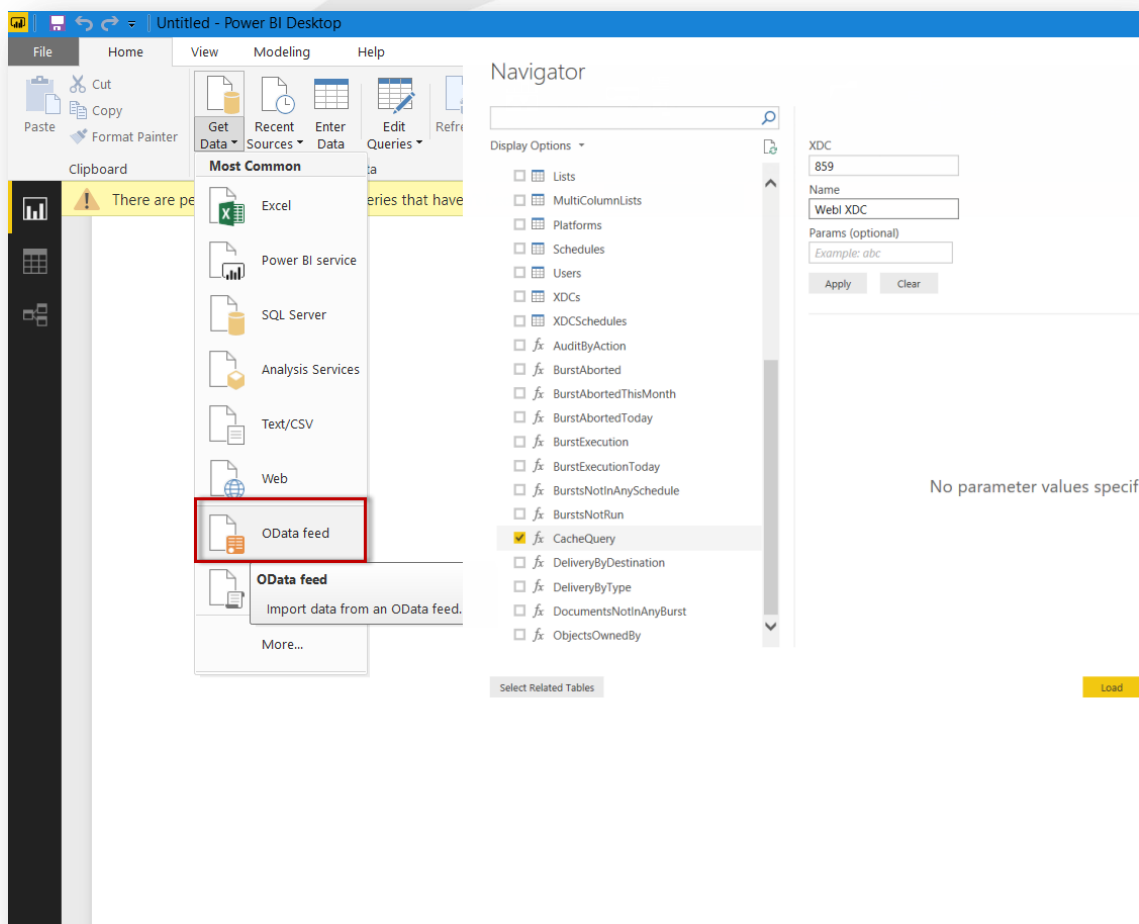


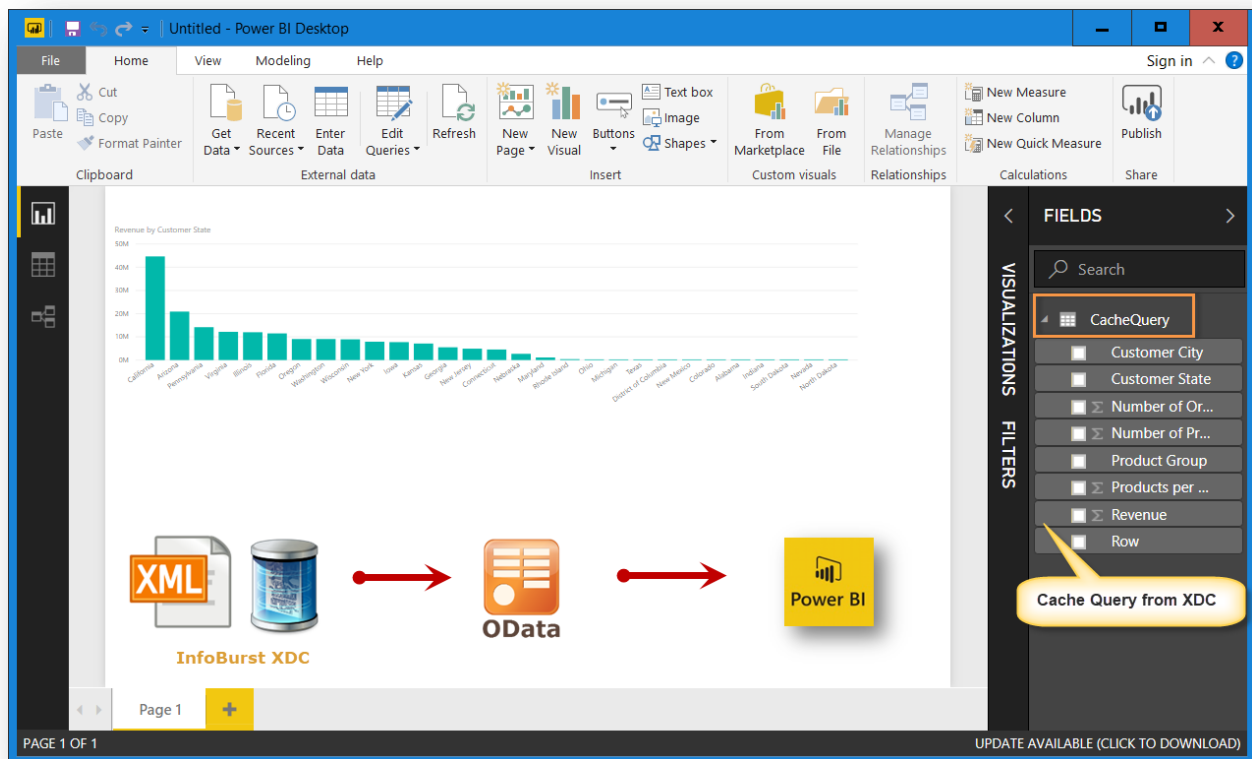
**Tableau 2018.1 Support** - While Tableau has always optimized performance for creating and refreshing extracts, version 2018.1 supports faster extract creation and refreshes for even larger data sets. InfoBurst 235 is certified for Tableau 2018.1. Hyper extracts can be delivered to Tableau 2018.1 server as .hyper file format.

## XML Data Cache (XDC)

Cache Queries from InfoBurst's XML Data Cache (XDC) are now exposed as an OData feed. Any tool that supports OData V4+ can leverage this functionality by connecting to InfoBurst's OData URL. A new function named "CacheQuery" has been added to our OData functions. The XML Data cache itself can be refreshed automatically by InfoBurst from a variety of sources including Web Intelligence reports, Excel, SQL queries and stored procedures.

We have validated this new function against Microsoft's Power BI. Connect to InfoBurst's OData URL, insert the XDC information and edit/massage the data to visualize XDC data in Power BI

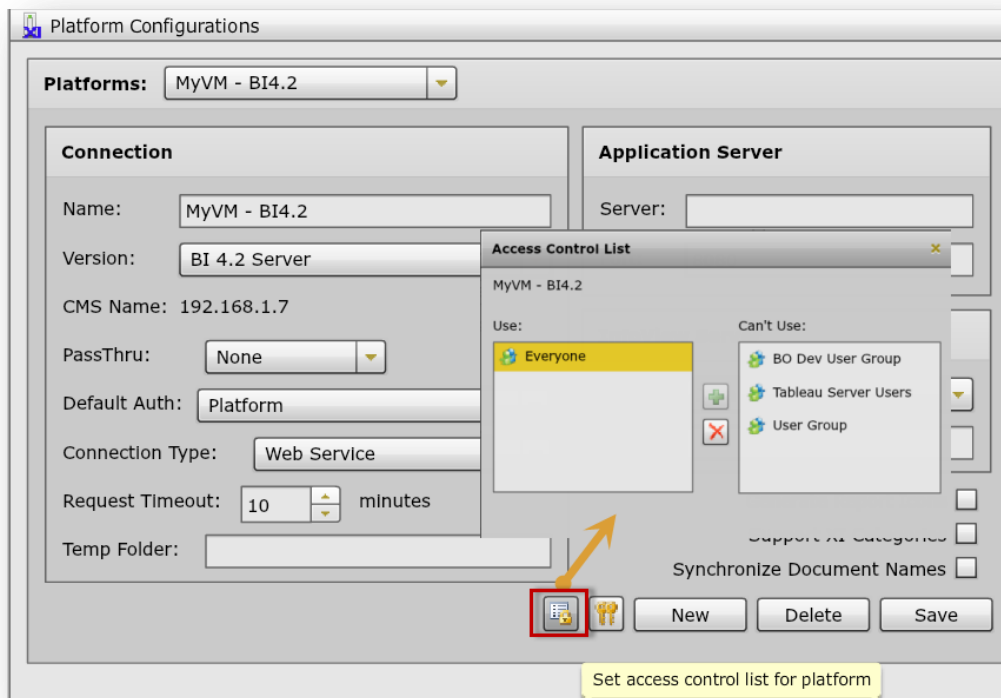




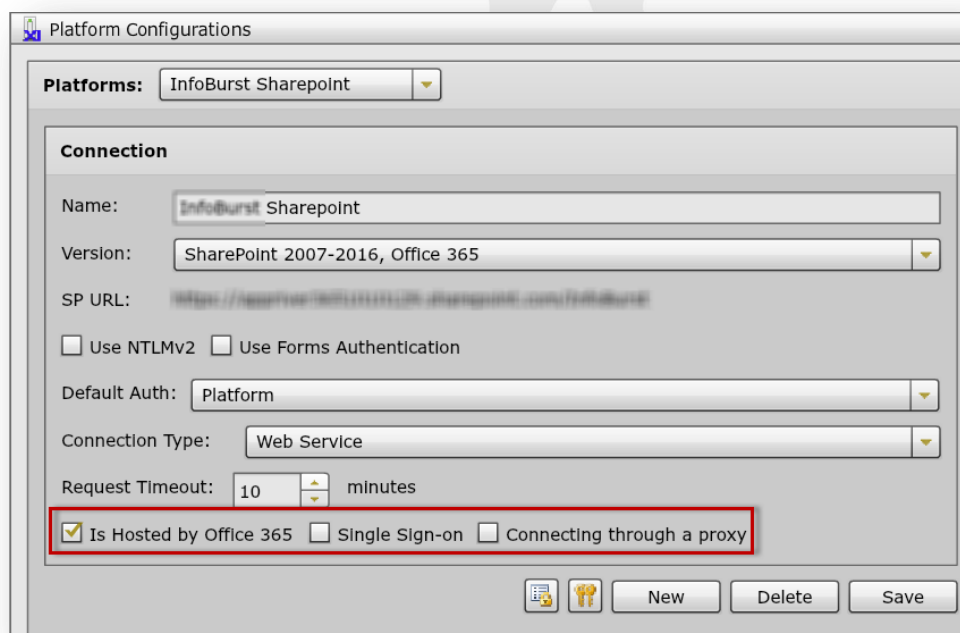
## Platform

**Platform Access Control** - In order to efficiently manage the different platforms configured, InfoBurst provides the functionality to restrict access to a certain platform based on an InfoBurst user group. For instance, if you would like to restrict Production server delivery access to a certain group, you can setup access control for the prod server under Platform Configurations

By default, the "Everyone" group is granted access to every platform. This group must be removed from the "Use" column to restrict access to the platform

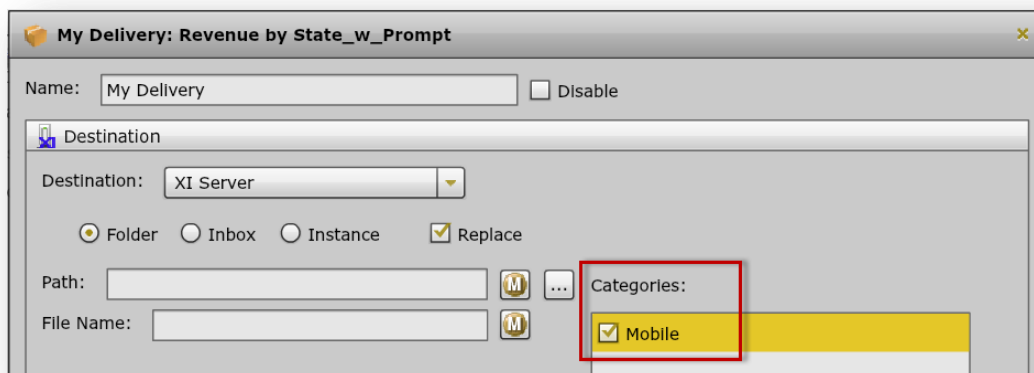


**Sharepoint** - New features are added to support Office 365, single sign on and connecting through a proxy.





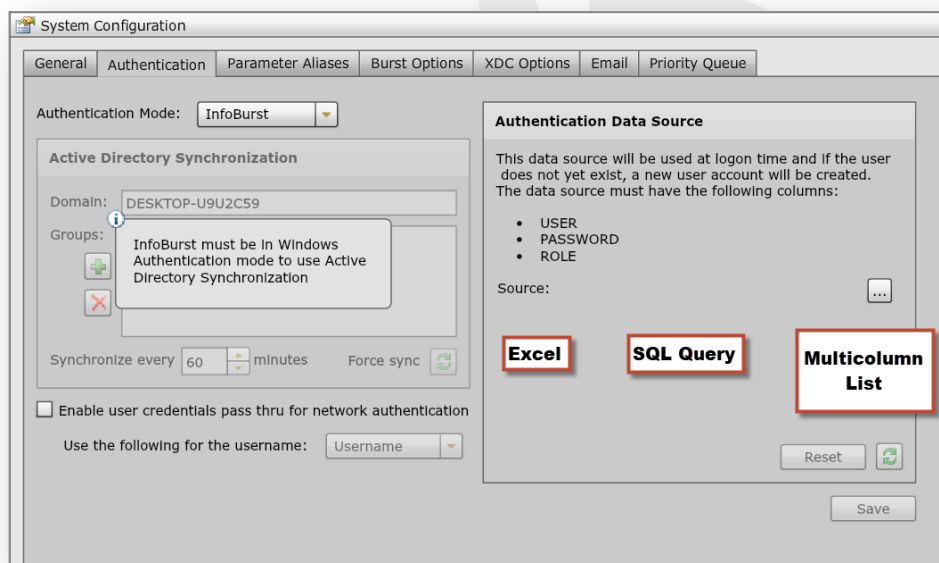
**BI Platform Categories** - InfoBurst Build 235 supports BI Categories as a delivery destination. A Web Intelligence document can be delivered to a BI Category created on the platform.



PS: The categories option is applicable only for BI 4.2 SP04 and above. The “Support XI Categories” option under platform configuration needs to be checked for the categories to be visible.

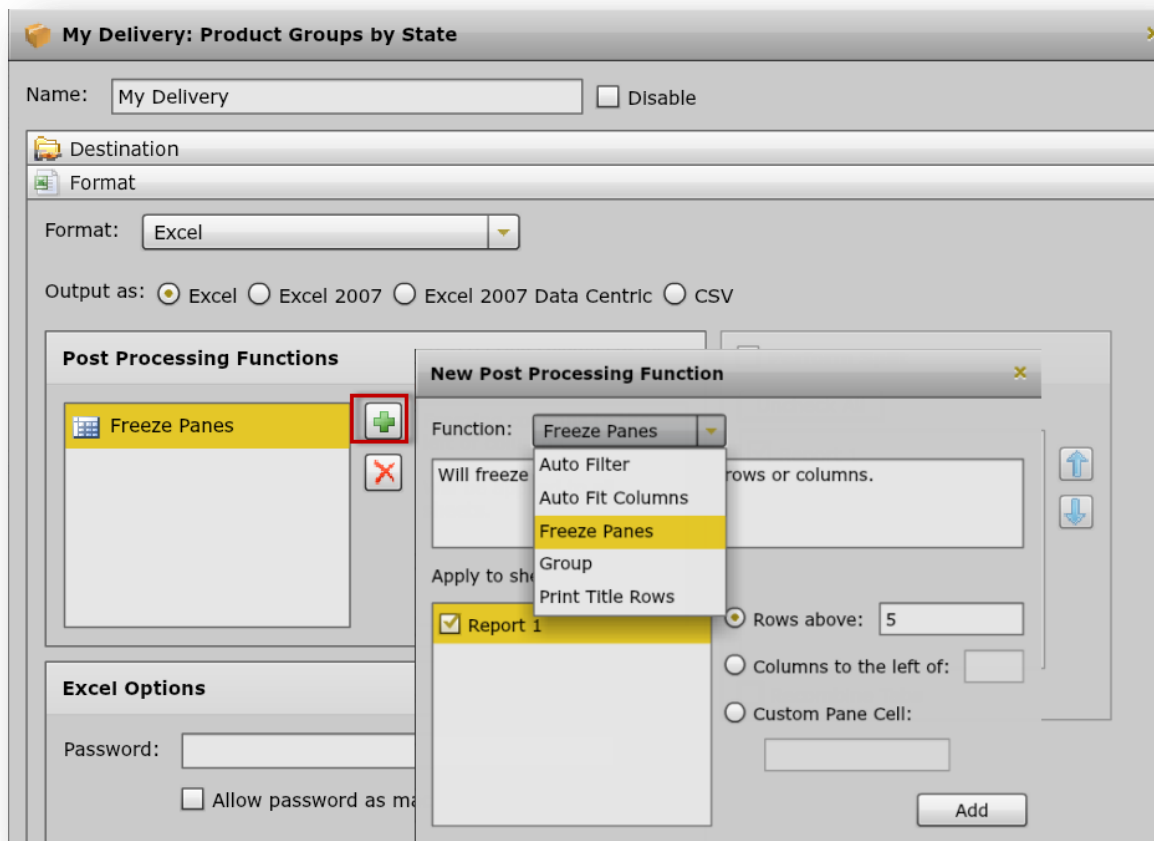
## Users & Group Management

InfoBurst Build 235 provides a Bulk update feature to add InfoBurst users from a tabular data source (Database Query, Excel, or MultiColumn List). This feature titled “Authentication data source (ADS)” is added to Settings -> System Configuration -> Authentication tab. ADS can be utilized to manage InfoBurst Portal users, dashboard consumers and users of the main InfoBurst interface.

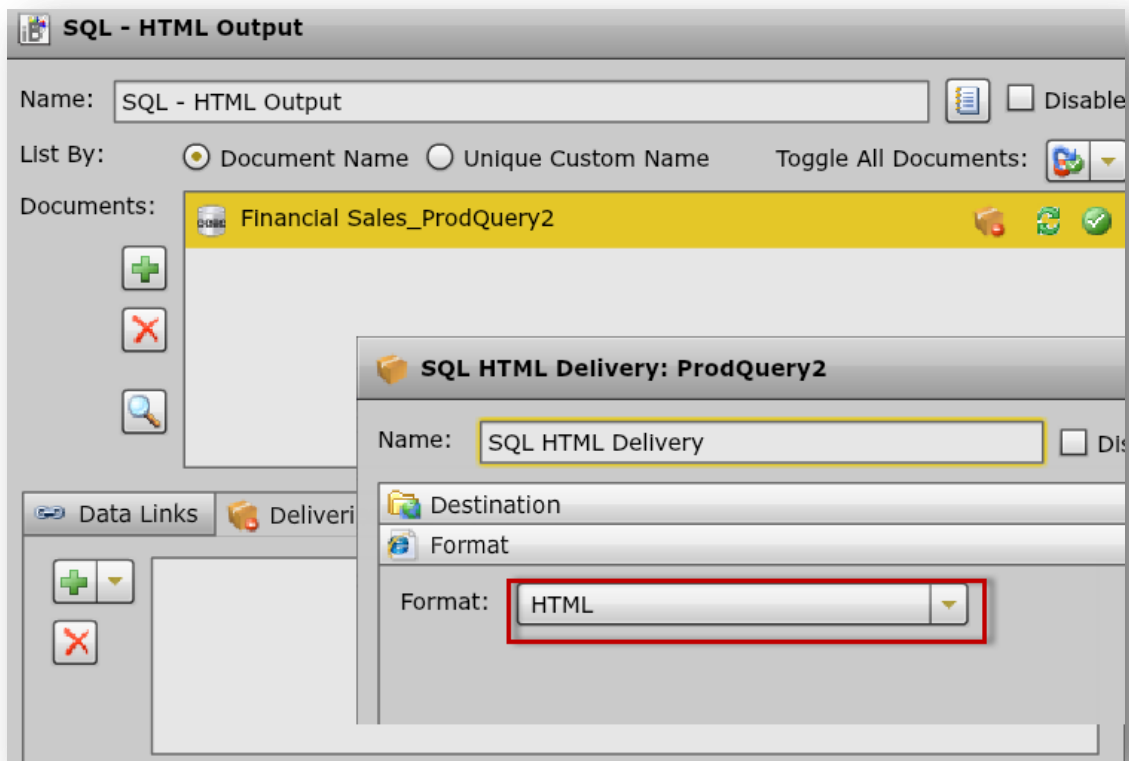


## Deliveries

**Excel Freeze Panes** - InfoBurst can now freeze excel rows and columns before delivering the excel file to a destination. This feature is added as an Excel post processing functionality.

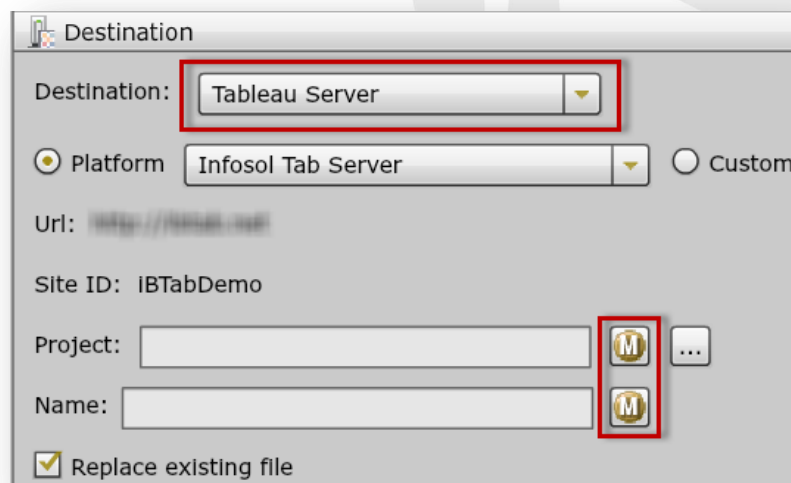


**SQL Query output as HTML** - The output of a SQL Query can now be displayed in HTML format. The HTML output can be published to InfoBurst portal as well. The "DBQry\_Table.css" file delivered in the InfoBurst root directory can be modified for a customized HTML output.



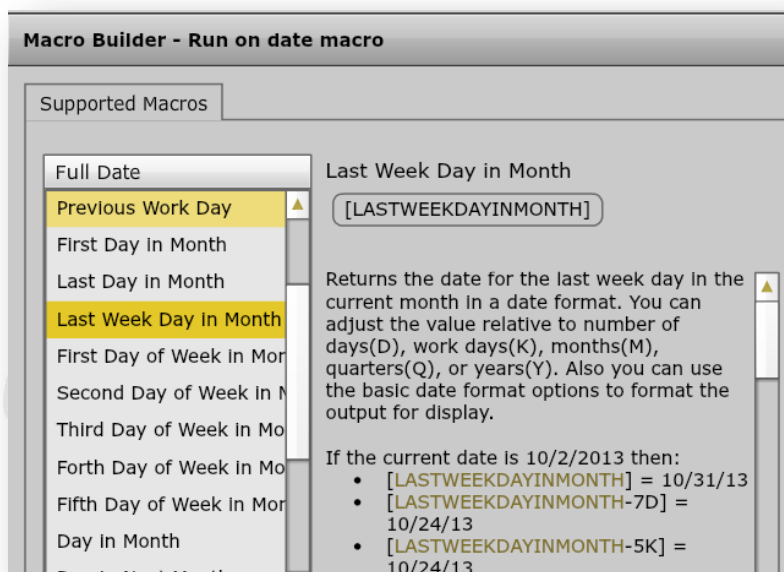
## Macros

**Tableau Project Macros** - With the introduction of nested projects in Tableau 10.5, you can organize Tableau content within the server. In build 235, InfoBurst can dynamically create projects on your Tableau server. Projects and nested sub-projects can be customized using InfoBurst's Macro Builder

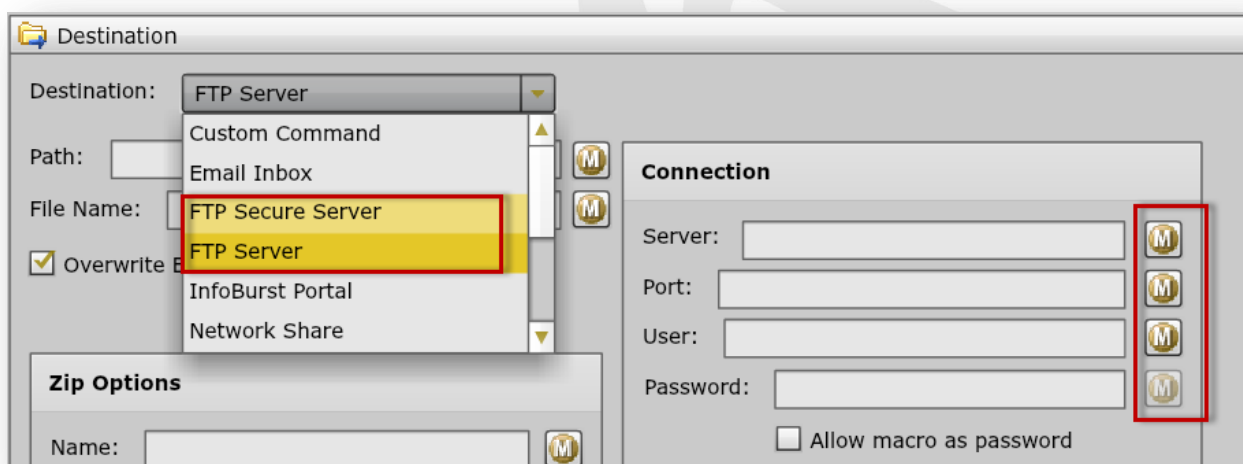


**Date Macros** - Three new Date Macros are added in this release

LASTWEEDAYINMONTH	Returns the date for the last weekday in current month
LASTWEEDAYINQTR	Returns the date for the last weekday in current quarter
LASTWEEDAYINYEAR	Returns the date for the last weekday in current year

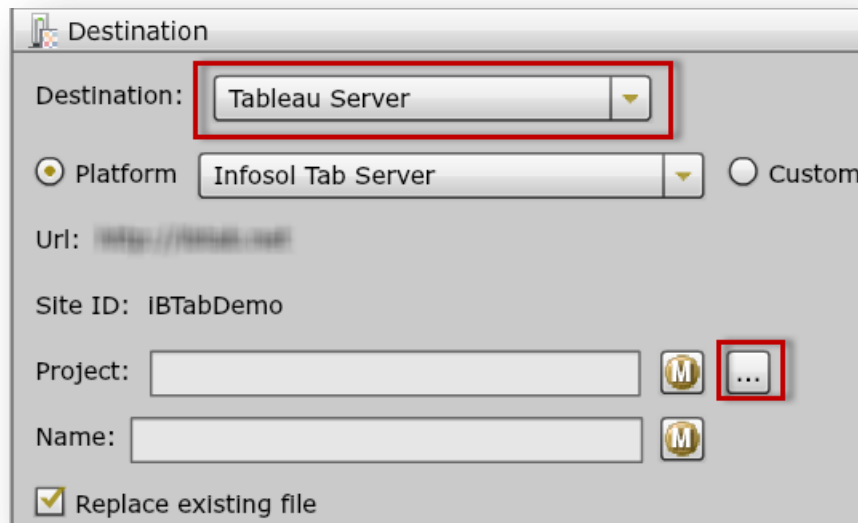


**FTP Server Connection Details** - The connection details for FTP secure server, FTP server and SSH FTP server are now macro enabled. The Connection details can also be controlled using a Data source.

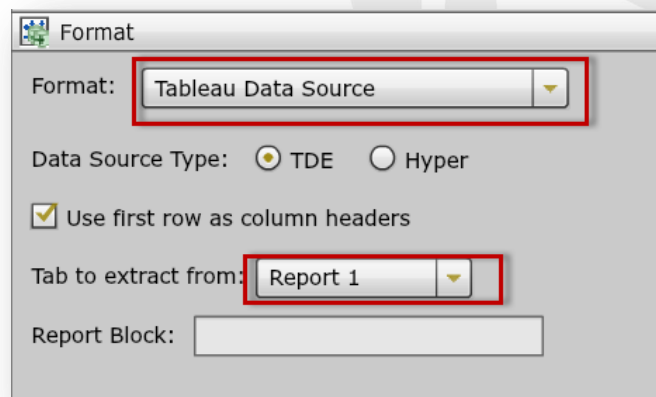


## Enhancements added to existing features

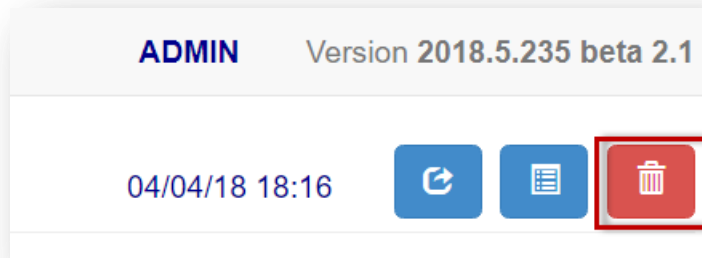
**Tableau Project Browse** - An ellipsis button is added to browse Tableau projects on server. This facilitates selecting the right project for delivery without the need for copy & paste.



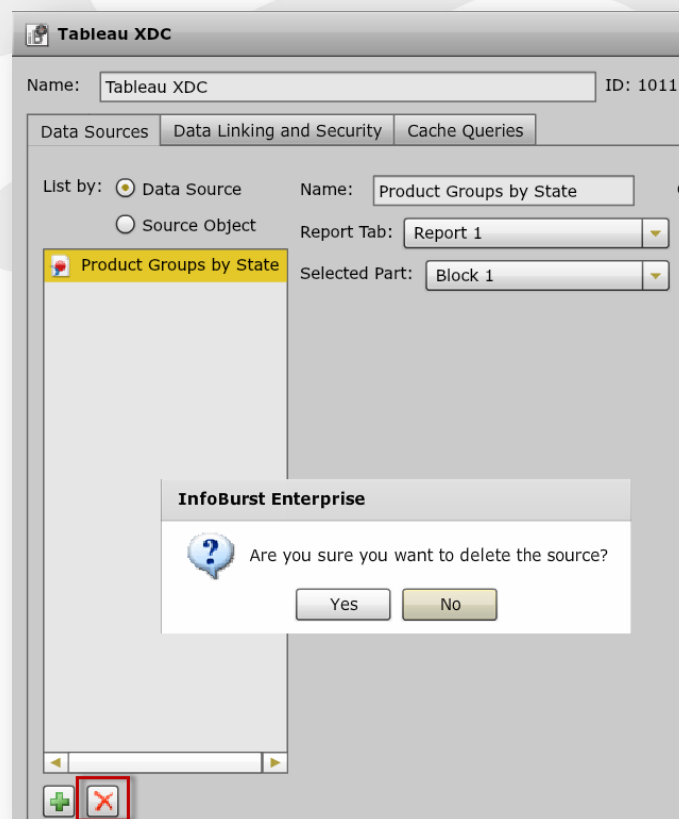
**Tableau Data source Format** – Since InfoBurst Build 235 supports both Tableau 10.3 and above, we still provide the ability to create .tde files. The format is listed as Tableau data source in the dropdown. The data source type is defaulted to TDE. Also the “Tab to extract from” is now defaulted to the first tab in Web Intelligence report.



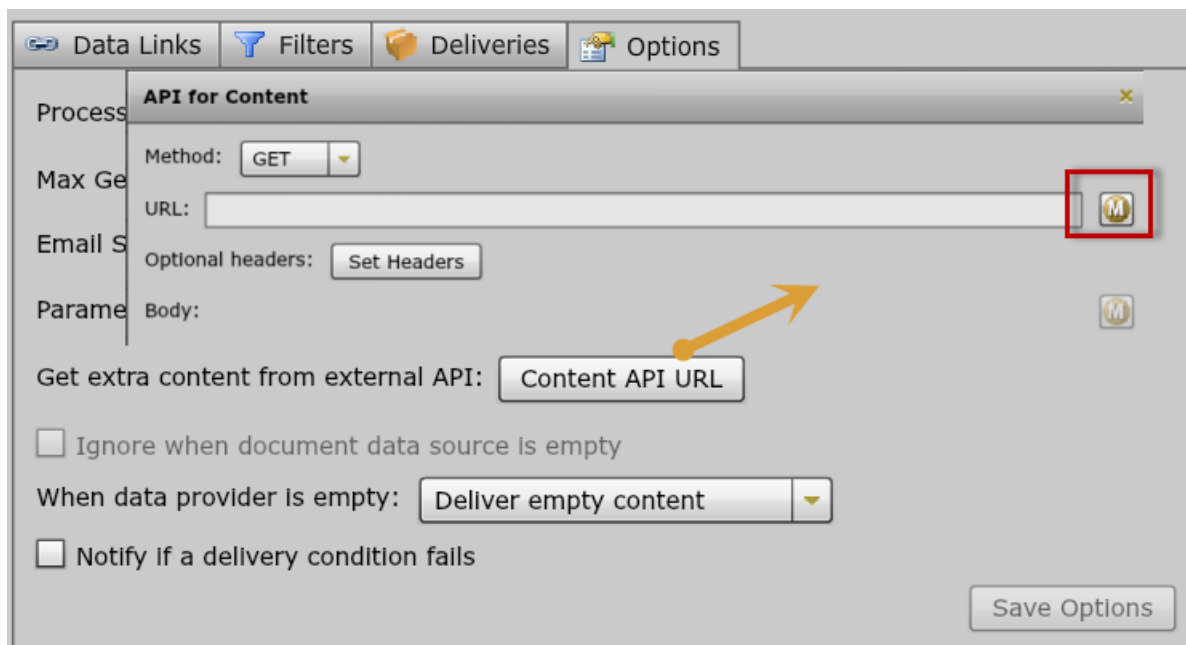
**Portal Version Deletion** - Selected versions of a document in Portal can be now be deleted directly on the portal



**Confirmation for XDC Data Source Deletion** - A new confirmation dialogue is added for XDC data source deletion



**Macro enabled Content API URL** – In our previous build (234), Content API URL was introduced to extract a PDF or Excel from an external RESTful web service as part of a burst. In build 235, the URL for Content API is macro enabled.



**Expanded View for Audit Logs** – The Audit log details now text wraps to the next line.

Audit Logs				
<input type="radio"/> Today <input type="radio"/> Yesterday <input checked="" type="radio"/> Last 3 Days <input type="radio"/> Last 7 Days <input type="radio"/> Custom Range				
Time	User	Action	Details	
5:26:57 PM	ADMIN	Rename Object	Type='Burst', ID=908, Path='\\BIA Demo\\ibTab-UNC Health\\New Folder\\New Folder\\Dashboard Burst - Copy', OldName='Dashboard Burst'	
5:26:49 PM	ADMIN	Copy Object	Type='Burst', ID=534, Path='\\BIA Demo\\John Deere\\Dashboard Burst', NewID=908, NewPath='\\BIA Demo\\ibTab-UNC Health\\New Folder\\New Folder\\Dashboard Burst'	
5:26:37 PM	ADMIN	Create Folder	ID=907, Path='\\BIA Demo\\ibTab-UNC Health\\New Folder\\New Folder\\'	
5:26:37 PM	ADMIN	Create Object	Type='Folder', ID=907, Path=''	

**Extended Logging** – The actions - On Start, On Complete and On Abort are now visible in the Burst/XDC Activity Log

## Fixed Issues

### 1. Filtering + Max Generation may result in file name/data mismatch

This issue can occur under the following circumstances:

- Burst via filter
- Use of Report Variable for filter values
- Document processing exceeds Max Generation time
- Report Variable list during Max Generation retry does not match initial Report Variable list

In this scenario a file may contain data from the previous filter value.

### 2. XDC Data Source not deleted

An XDC contains a single data source. The data source is deleted. Close and re-open the XDC. The deleted data source is still present.

### 3. PDF Grouping option "Hide Table of Contents" doesn't work using group by recipient

A burst contains multiple documents. Each document has an email delivery. Content Grouping to PDF is enabled and the "Hide Table of Content" option is enabled. The resulting grouped PDF contains a table of contents.

### 4. Logon message "Subscription expires in"

The InfoBurst logon screen displays message "Subscription expires in". The message can appear for a server with a permanent license key or subscription license where no expiry date is displayed.

### 5. Delivery Conditions ignored when using single document with multiple deliveries

A burst contains a single document. The document has two deliveries, both with delivery conditions. If the first condition is false, then the second condition is not evaluated and both deliveries are executed.

### 6. Delivery Condition not working using single document with multiple deliveries

A WebI document contains two report tabs. The document is added to a burst with two deliveries. The first delivery uses tab splitting with the first tab selected. The delivery has a condition. The second delivery uses tab splitting with the second tab selected. The delivery has a condition.



If the condition for the first delivery is true, then the condition for the second delivery is evaluated. If the condition for the first delivery is false, then the condition for the second delivery is not evaluated.

#### **7. Delivery Condition issue when bursting**

A Business Intelligence document is used in a burst. The document delivery uses a delivery condition. If the condition for the first pass is true, the first document is delivered but deliveries from subsequent passes are not delivered. If the condition for the first pass is false, then the first document is not delivered and deliveries from subsequent passes are not delivered.

#### **8. Crystal Report Oracle DB Connection Not Detected During Cataloging**

A Crystal document uses an Oracle database connection. The connection is not detected as part of the cataloging process.

#### **9. Excel CSV from DB Query results in TXT file when zipped**

A burst contains a database query where the delivery is CSV format zipped and a custom file name for the CSV file. In this scenario the resulting zipped file is TXT rather than CSV.

#### **10. XI Categories unavailable**

A BusinessObjects Platform has XI Categories enabled. Categories are not available when creating an XI Server delivery.

#### **11. Not able to switch between Tableau Servers in the delivery**

While switching between multiple Tableau servers in the delivery section, the server URL does not change based on the selection made.

#### **12. "Referenced By" option missing for Schedule**

The right-click option "Referenced By" not present for a schedule.

#### **13. Cannot select DB query as Data Source for Crystal Filter**

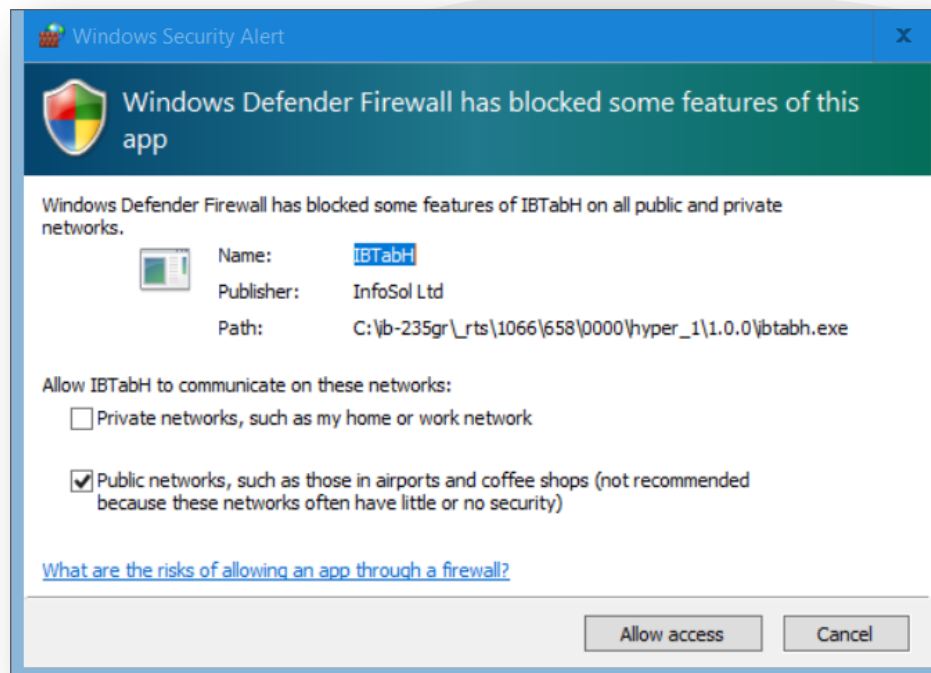
When attempting to apply a Database Connection (query) as Crystal filter data source, the following error occurs:

*Previously selected query no longer exists in the DBConnection. Please choose a new query.*

# Known Limitations/Issues

## 1. Tableau Hyper Format – Windows Firewall warning

While delivering a Hyper file via InfoBurst, windows firewall warning pops up. The selection in the pop up does not make any difference. A Hyper file gets delivered without any issues. This limitation will be addressed in our next build



## 2. Distributing Tableau workbook images for a workbook based on a Live Data source

Refreshing a Tableau workbook based on a “Live” data source is currently not supported in InfoBurst. The refresh will fail when a workbook based on a live datasource is added to burst.