



seeing beyond™

InfoBurst Build 238

Release Notes

September 5, 2019

Version Details

Platform: 2019.7.238, UI: 3.3.39



Table of Contents

Supported Platforms..... 3

What’s new with InfoBurst Build 238? 3

 Tableau – New Features in ibTab..... 3

 XDC’s & Tableau..... 5

 Deliveries..... 7

 Portal..... 8

Fixed Issues 8

Supported Platforms

InfoBurst Build 238 supports the following software versions

Software	Version
SAP BusinessObjects	<ul style="list-style-type: none">• BI 4.2 (SP02 – SP07)• BI 4.1 (SP01 – SP12)• BI 4.0 (SP1 – SP9)• XI 3.1 (SP1 – SP7)
Tableau	<ul style="list-style-type: none">• Tableau Server 10.3 - 2019.3
Microsoft SSRS	<ul style="list-style-type: none">• 2005 - 2016
Sharepoint & Office 365	<ul style="list-style-type: none">• 2007 - 2019

What's new with InfoBurst Build 238?

The What's new section provides an overview on the new features that have been added to InfoBurst since the previous release. The new features are categorized into following InfoBurst categories

- Tableau
- XDC's & Tableau
- Deliveries
- Portal

Tableau – New Features in ibTab

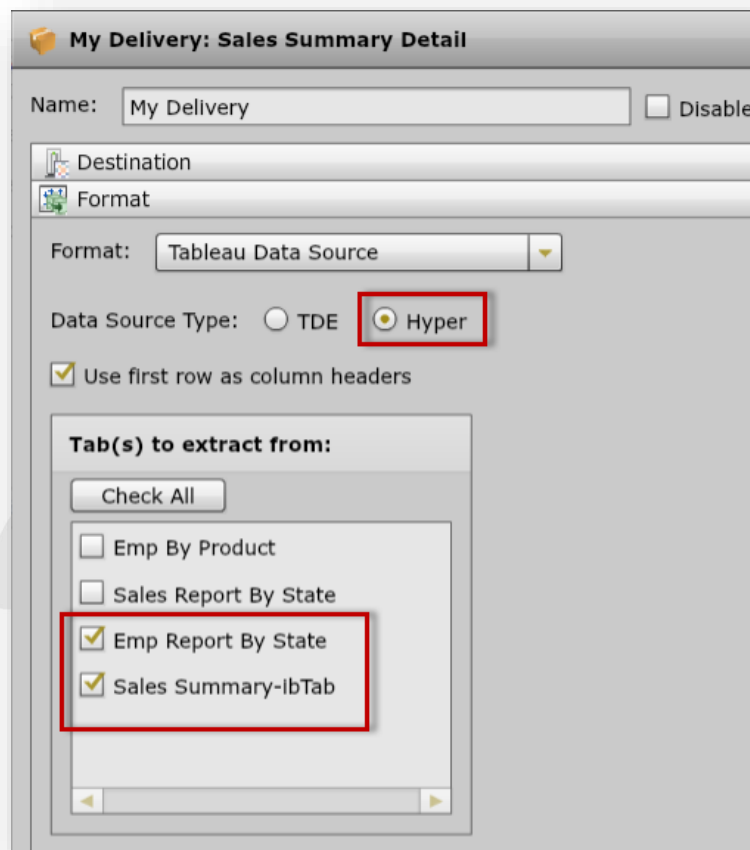
Multiple WebI report tabs as Hyper files

In our prior releases of InfoBurst, while selecting a Web Intelligence report tab for a Hyper delivery there was limitation of 1 report tab in a single delivery. With Build 238, you can now deliver multiple reports tab data as hyper files to Tableau server. In a single delivery, InfoBurst users can now deliver multiple hyper files to Tableau server or network share – one hyper file per report tab

The naming syntax for the hyper file is as follow

<Report-Name>_<Paramater-Value>_<Report-Tab-Name>

Also, the Tableau Data source selection is now defaulted to Hyper File



My Delivery: Sales Summary Detail

Name: ☐ Disable

Destination

Format

Format:

Data Source Type: ☐ TDE ☒ Hyper

☒ Use first row as column headers

Tab(s) to extract from:

☐ Emp By Product

☐ Sales Report By State

☒ Emp Report By State

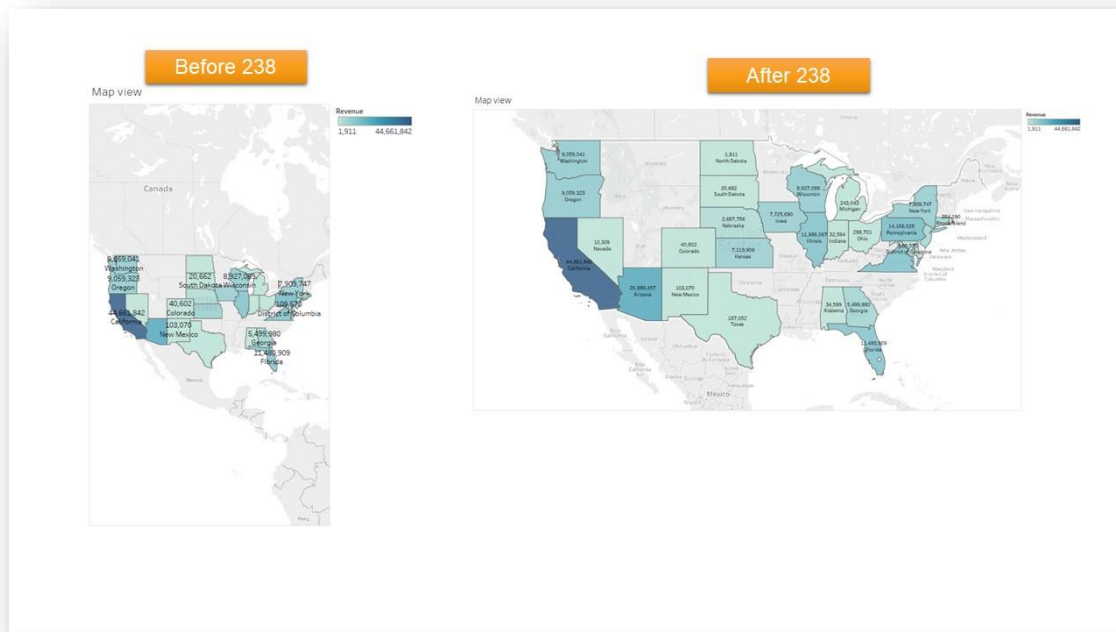
☒ Sales Summary-lbTab

High Resolution Tableau Images

Prior to 238, by default, the width of the returned Tableau dashboard image was 784 pixels which was low resolution. Starting build 238, the tableau dashboard image will be in high resolution (1568 pixels)

PDF Landscape Orientation

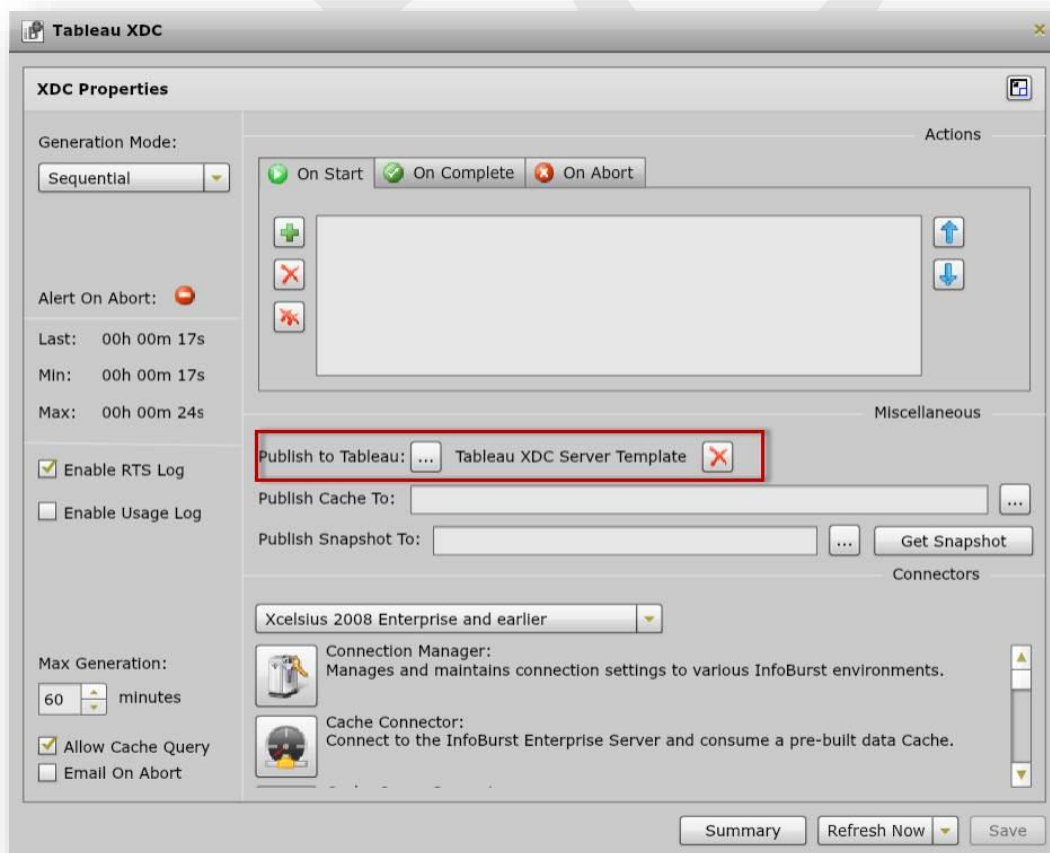
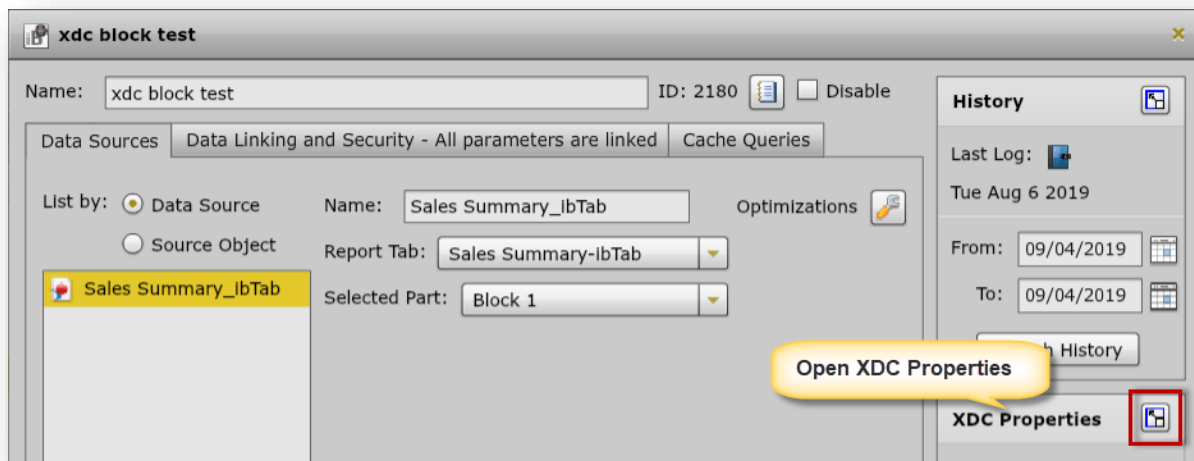
In our previous builds, the orientation of a Tableau dashboard's PDF output was defaulted to portrait and this caused the dashboard images to be squeezed. In Build 238 the PDF outputs are defaulted to landscape to support the various image sizes in a dashboard.



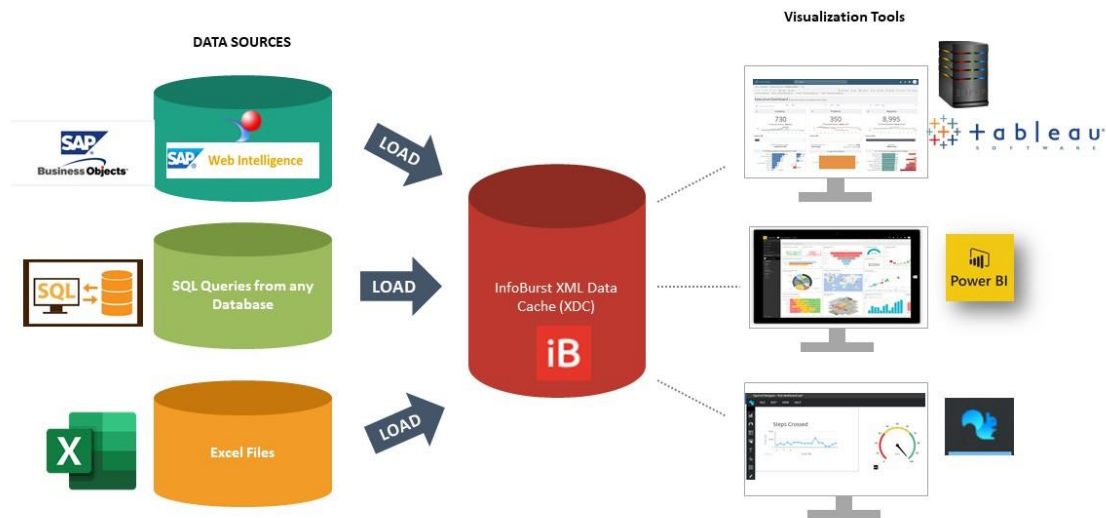
XDC's & Tableau

XDC Cache to Tableau Hyper

InfoBurst XDC is data cache (in memory or disk) that can house millions of rows of data in XML format that can be instantly accessed from your Dashboard using special add-on connectors included with InfoBurst. Since SAP announced end of life for Xcelsius, customers are figuring out alternate options for their dashboards. In our previous build, we released a Power BI connector for Cache Queries. In 238 we are releasing a “Publish to Tableau” connector in the XDC Properties. Users can now create a Tableau Server delivery template and add this template to the cache. The XDC cache will be published as a hyper file to destination specified in the template.



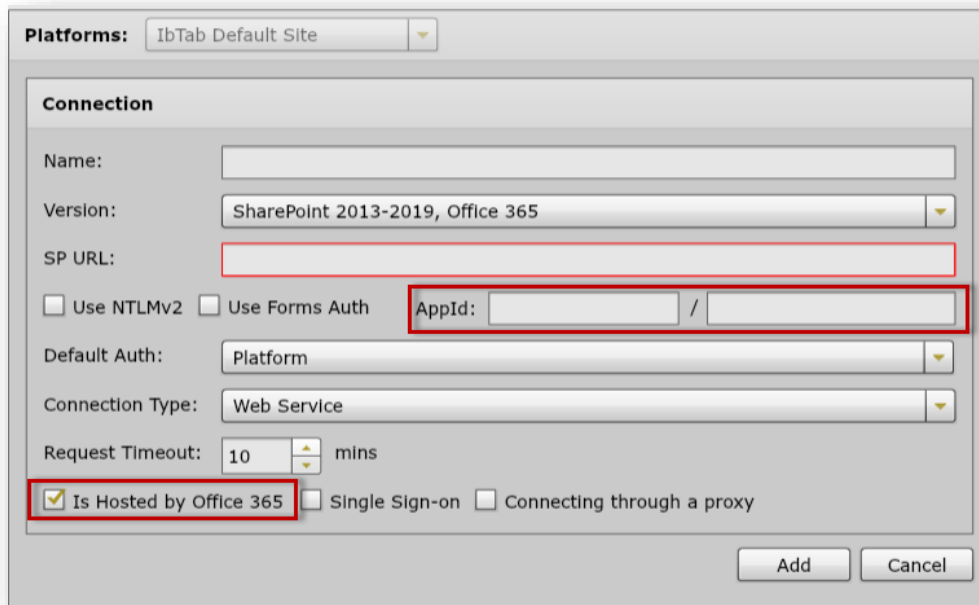
The Power of InfoBurst XDC [TODAY]



Deliveries

Sharepoint Online - Build 238 now supports Sharepoint online with multi factor authentication. Customers are now starting to implement multi factor authentication in which user authentication is a two-step process and requires the user to prove their identity. In addition to passwords, users are expected to acknowledge a phone call/ text message or mobile app notification to complete the verification process. Multi-Factor Authentication for Office 365 is a form of Azure Multi-factor Authentication that comes bundled with an Office 365 subscription.

To support this type of authentication and to securely deliver documents to a sharepoint site, InfoBurst uses the App ID and Secret key mechanism for Sharepoint.



Portal

iB Portal on its own port – Prior to Build 238, the InfoBurst portal was available only on the same InfoBurst port 8551. In this new build, users can host the portal on a separate port so that the portal can be exposed to users external to the firewall. Exposing the portal on its own port does not expose the InfoBurst repository objects.

Fixed Issues

1. No file extension when using Tableau CSV

A burst is configured to deliver a Tableau workbook as CSV where the CSV file name is customized. In this scenario, the file is delivered with no file extension.

2. If-Empty email notification not sent

A Burst document has email delivery. The delivery uses a Delivery Condition. The If-Empty email notification is enabled in the delivery. In this scenario, no email notification is sent when the Delivery Condition is false.

3. Tableau Site ID and URL not retained in Delivery Template

A Delivery Template is configured for Tableau Server, which includes URL and Site ID values. When the template is re-opened, the URL and Site ID values are missing.