



seeing beyond™

InfoBurst Build 240

Release Notes

July 15, 2020

Version Details

Platform: 2020.7.240, UI: 2020.7.15

Table of Contents

Supported Platforms.....	3
What's new with InfoBurst Build 240?	3
HTML UI	3
Analytics.....	3
Selective Schedule Re-run.....	4
Instant access to runtime logs	5
Enhanced DB Connection UI	5
Revamped Search Module.....	6
Platform	7
Apply Delivery templates to multiple documents in a Burst	7
References within the Burst UI	7
Dataprovider CSV option for multiple universe queries	8
Tableau – New Features in ibTab.....	8
WebI Data Provider as Hyper.....	8
Excel Download from Tableau workbooks.....	9

Supported Platforms

InfoBurst Build 238 supports the following software versions

Software	Version
SAP BusinessObjects	<ul style="list-style-type: none">• BI 4.2 (SP02 – SP08)• BI 4.1 (SP01 – SP12)• BI 4.0 (SP1 – SP9)• XI 3.1 (SP1 – SP7)
Tableau	<ul style="list-style-type: none">• Tableau Server 10.3 - 2019.3
Microsoft SSRS	<ul style="list-style-type: none">• 2005 - 2016
Sharepoint & Office 365	<ul style="list-style-type: none">• 2007 - 2019

What's new with InfoBurst Build 240?

The What's new section provides an overview on the new features that have been added to InfoBurst since the previous release. The new features are categorized into following InfoBurst categories

- HTML UI
- Platform
- Tableau

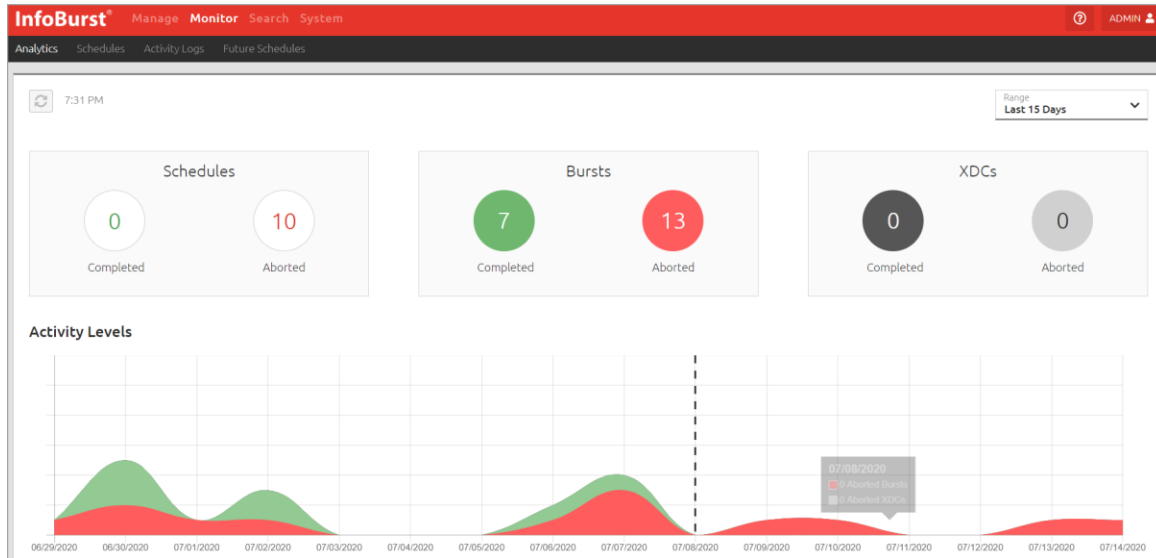
HTML UI

The new user interface for InfoBurst is unveiled in Build 240. The HTML5 User Interface(UI) is the replacement for our legacy Flash UI and will be primary/default UI moving forward. The flash UI can be still accessed from HTML UI's login page. Please note Adobe [ends Flash support](#) by 2020. existing bursts, schedules and other workflows in your InfoBurst Dev system using the new UI. New and enhanced features will be added only to the HTML UI along with our platform releases. The new UI is sleek, modern and very easy to use. To access the new UI for your existing InfoBurst deployment, upgrade your platform to Build 240. Please test all your existing bursts, schedules and other workflows in your InfoBurst Dev system using the new UI. Check out the HTML 5 helpdesk forum for video tutorials

<https://help.infosol.com/support/solutions/articles/19000116492-infoburst-html5-user-interface>

Analytics

A new Analytics section is added to InfoBurst's landing page which will display the status of Burst's, XDC's and Schedules. To troubleshoot the failed bursts and rerun the failed schedules, you can navigate from the analytics section and re-run a failed burst. The drop down at the top right allows users to analyze Infoburst's XDCs, bursts and schedules up to last 30 days.



Selective Schedule Re-run

When a schedule aborts, users have the option to re-run a schedule from the alerts and notifications section. Users can select any particular burst within a schedule that requires a re-run.

Item
● Webi to TDE Burst

Show All
 Re-Run

Webi to TDE Burst

Action	Detail	Start	End
Logon	<div style="background-color: #e6f2ff; padding: 2px;">Item: Product Groups by State</div> Error ==> An error occurred while sending the request. => Unable to connect to the remote server => A connection attempt failed because the connected party did not properly respond after a period of time, or established connection failed because connected host has failed to respond 74.118.182.123:6405	07:15:04	07:15:25
	<div style="background-color: #e6f2ff; padding: 2px;">Item: Product Groups by State</div> Error ==> Error while opening document :: Logon :: Platform='vm3InfosolCloud', User='rponnurangam' ==> An error occurred while sending the request. => Unable to connect to the remote server => A connection attempt failed because the connected party did not properly respond after a period of time, or established connection failed because connected host has failed to respond 74.118.182.123:6405	07:15:25	07:15:25

Re-run Schedule

\Apple\New Schedule

Run All
Only Aborted
Select what to Run

☐ ● Webi to TDE Burst

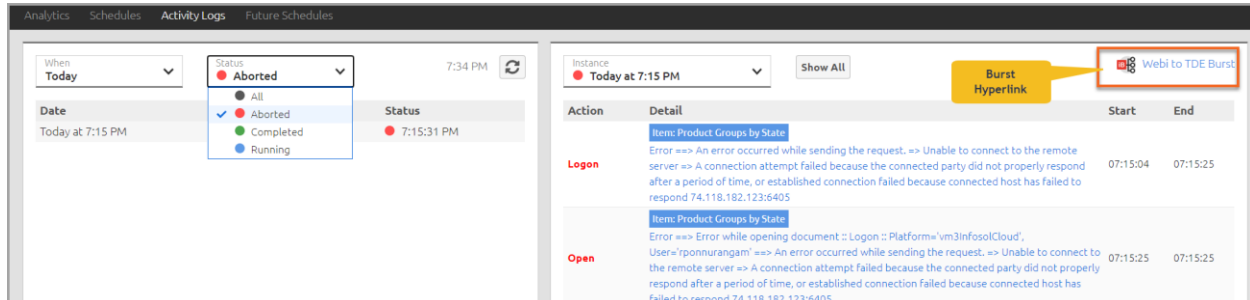
☐ Wait for Events

☐ Run Actions

Page 4

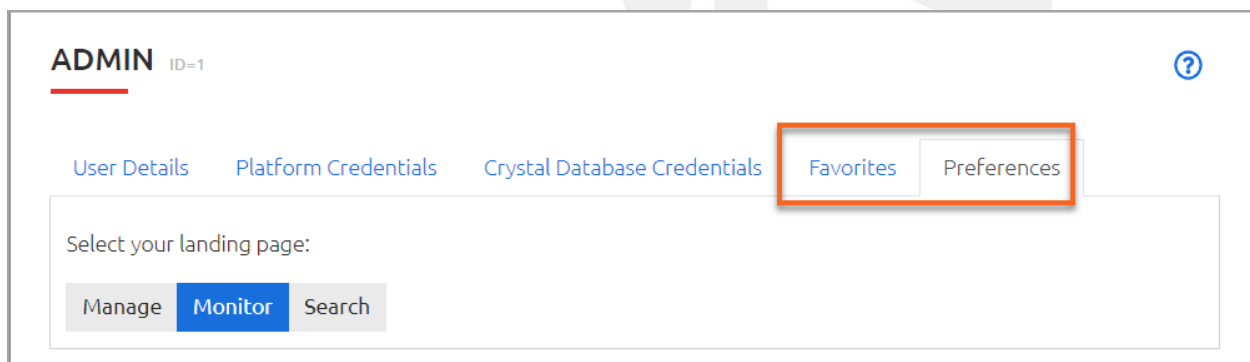
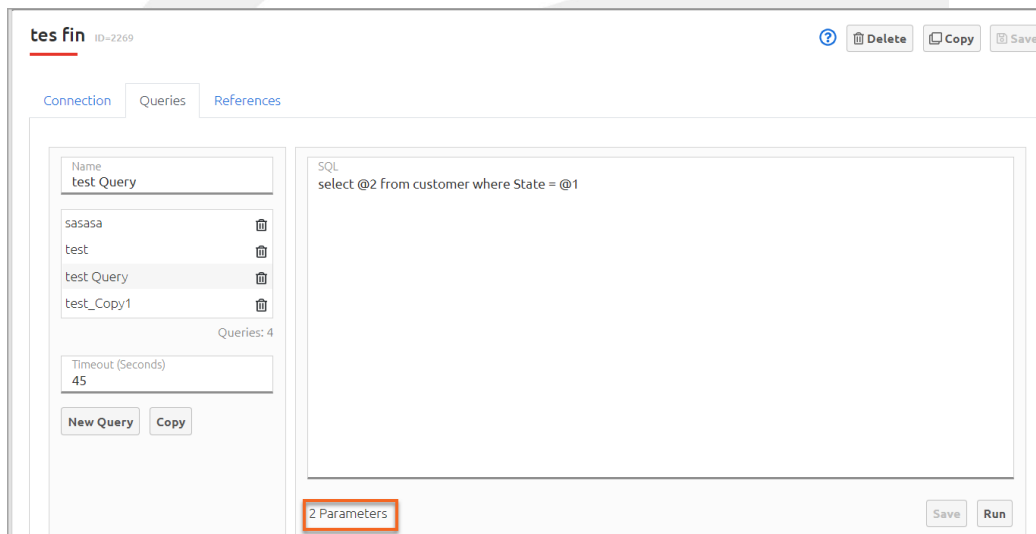
Instant access to runtime logs

Display the erroneous logs for Aborted bursts/schedules and navigate to the Burst from the Activity screen



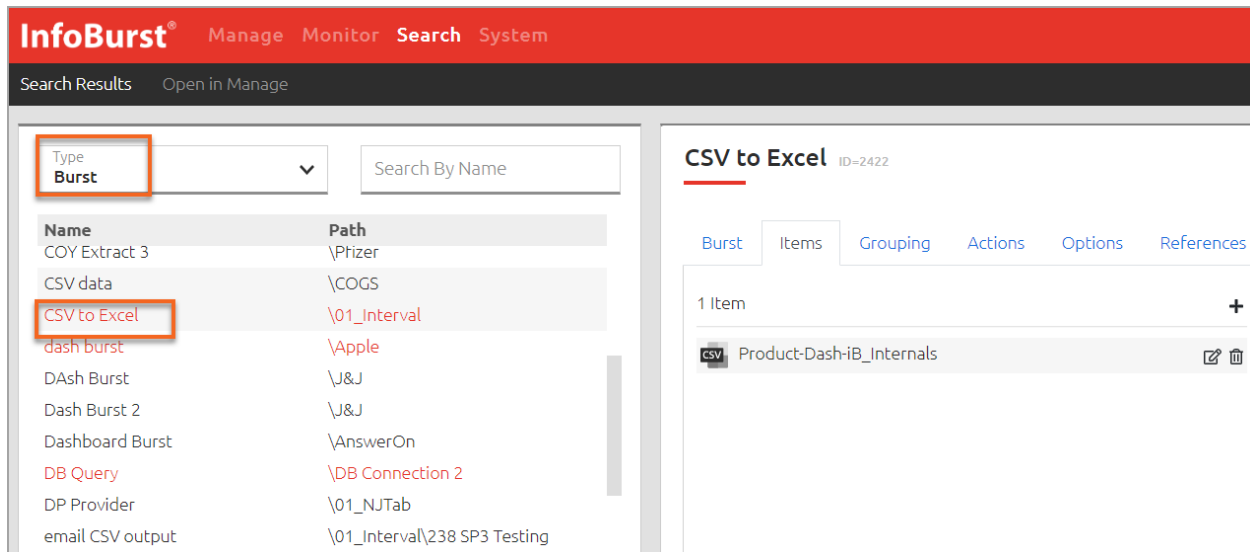
Enhanced DB Connection UI

Parameters are auto detected when queries are executed



Revamped Search Module

Navigate/edit the searched Object in the search user interface



InfoBurst® Manage Monitor Search System

Search Results Open in Manage

Type **Burst** Search By Name

Name	Path
COY Extract 3	\Prizer
CSV data	\COGS
CSV to Excel	\01_Interval
dash burst	\Apple
DASH Burst	\J&J
Dash Burst 2	\J&J
Dashboard Burst	\AnswerOn
DB Query	\DB Connection 2
DP Provider	\01_NJTab
email CSV output	\01_Interval\238 SP3 Testing

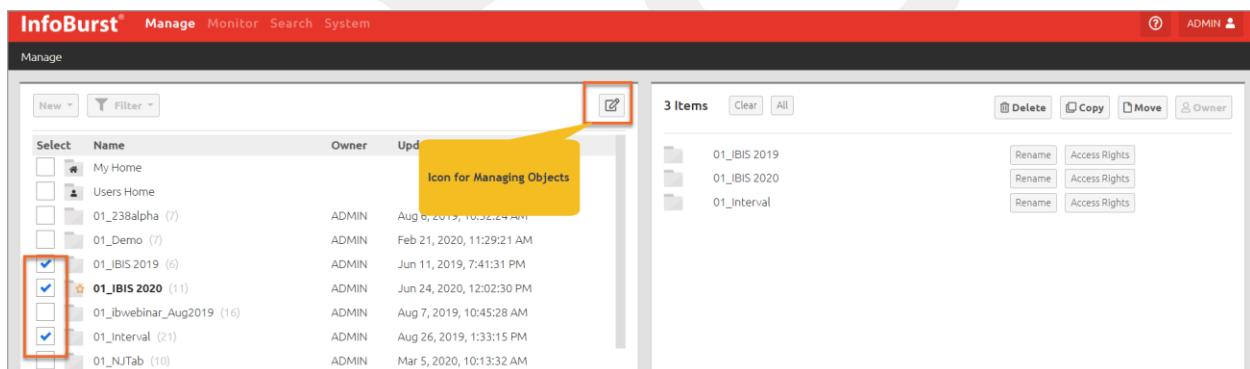
CSV to Excel ID=2422

Burst Items Grouping Actions Options References

1 Item

Product-Dash-iB_Internals

Bulk copy, move & delete option for InfoBurst Objects with multi select options



InfoBurst® Manage Monitor Search System ADMIN

Manage

New Filter

Select	Name	Owner	Updated
<input type="checkbox"/>	My Home		
<input type="checkbox"/>	Users Home		
<input type="checkbox"/>	01_238alpha (7)	ADMIN	Aug 6, 2019, 10:22:24 AM
<input type="checkbox"/>	01_Demo (7)	ADMIN	Feb 21, 2020, 11:29:21 AM
<input type="checkbox"/>	01_IBIS 2019 (6)	ADMIN	Jun 11, 2019, 7:41:31 PM
<input checked="" type="checkbox"/>	01_IBIS 2020 (11)	ADMIN	Jun 24, 2020, 12:02:30 PM
<input type="checkbox"/>	01_ibwebinar_Aug2019 (16)	ADMIN	Aug 7, 2019, 10:45:28 AM
<input checked="" type="checkbox"/>	01_Interval (21)	ADMIN	Aug 26, 2019, 1:33:15 PM
<input type="checkbox"/>	01_NJTab (10)	ADMIN	Mar 5, 2020, 10:13:32 AM

Icon for Managing Objects

3 Items Clear All

Delete Copy Move Owner

01_IBIS 2019 Rename Access Rights

01_IBIS 2020 Rename Access Rights

01_Interval Rename Access Rights

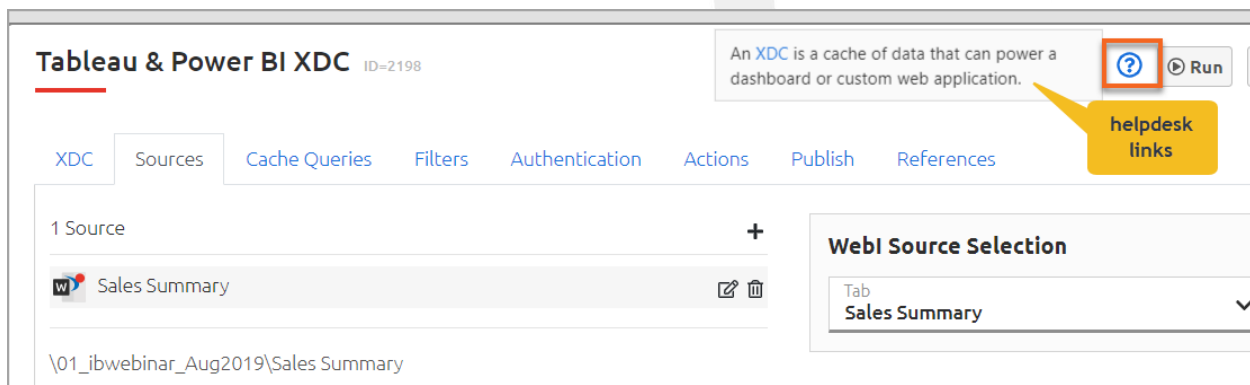


Tableau & Power BI XDC ID=2198

An XDC is a cache of data that can power a dashboard or custom web application.

helpdesk links

XDC Sources Cache Queries Filters Authentication Actions Publish References

1 Source

Sales Summary

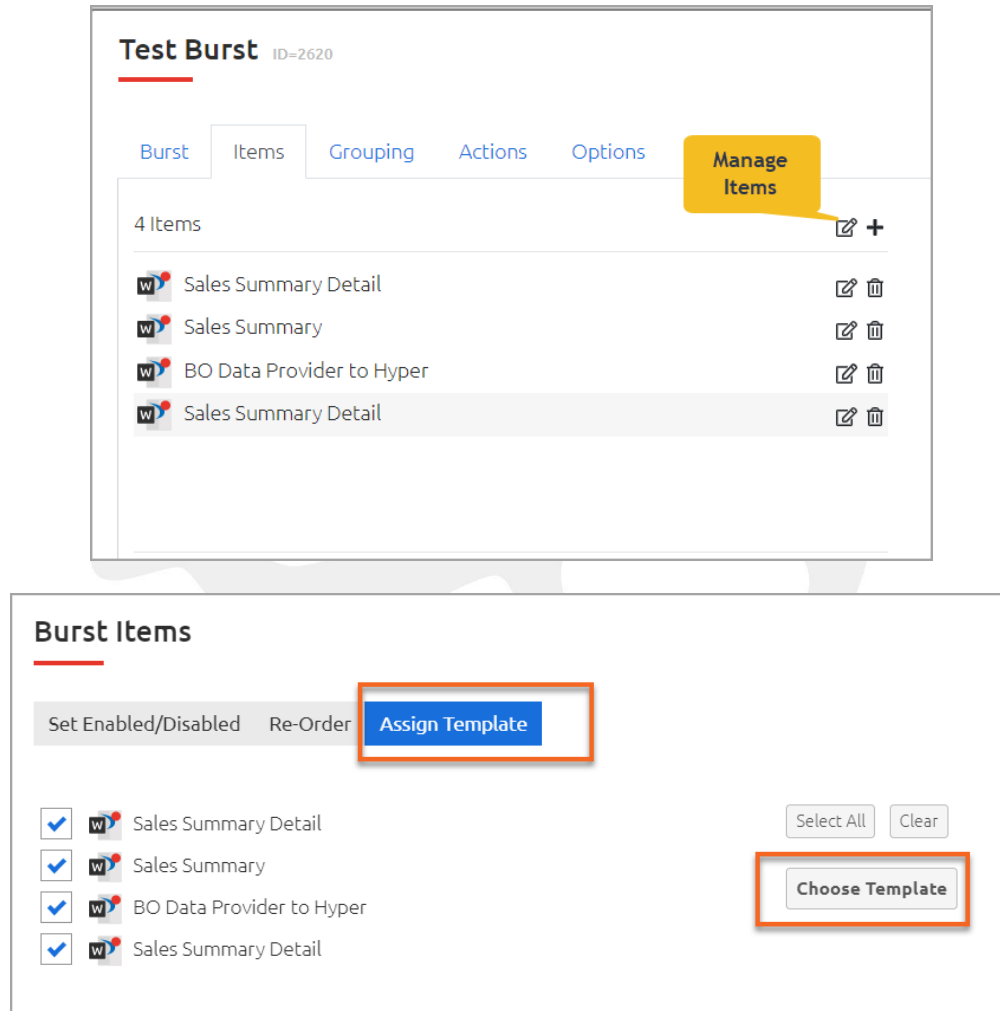
WebI Source Selection

Tab Sales Summary

\01_ibwebinar_Aug2019\Sales Summary

Platform

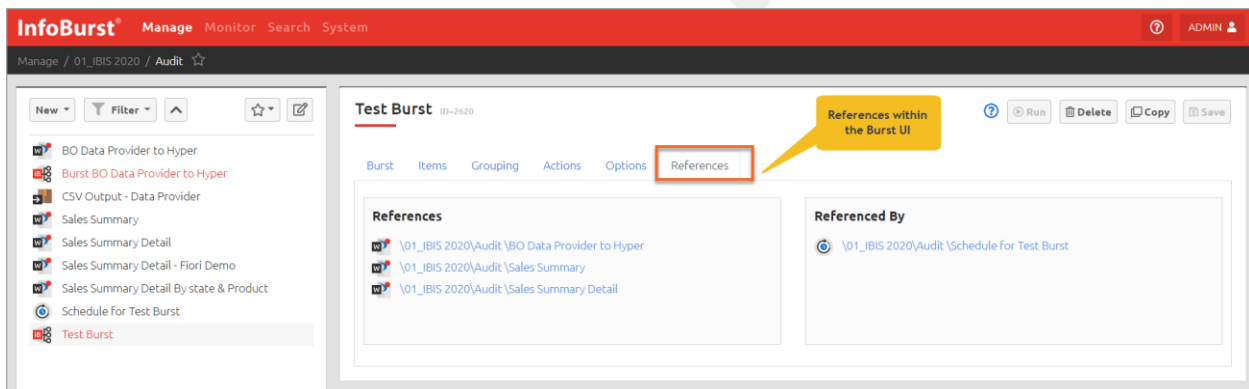
Apply Delivery templates to multiple documents in a Burst



The first screenshot shows the 'Test Burst' (ID=2620) interface. It has tabs for 'Burst', 'Items', 'Grouping', 'Actions', 'Options', and 'Manage Items'. The 'Items' tab is active, showing a list of 4 items: 'Sales Summary Detail', 'Sales Summary', 'BO Data Provider to Hyper', and 'Sales Summary Detail'. A yellow callout points to the 'Manage Items' button.

The second screenshot shows the 'Burst Items' interface. It has buttons for 'Set Enabled/Disabled', 'Re-Order', and 'Assign Template'. The 'Assign Template' button is highlighted with an orange box. Below the buttons is a list of items with checkboxes: 'Sales Summary Detail', 'Sales Summary', 'BO Data Provider to Hyper', and 'Sales Summary Detail'. To the right are 'Select All' and 'Clear' buttons. A 'Choose Template' button is also highlighted with an orange box.

References within the Burst UI



The screenshot shows the 'InfoBurst' interface. The top navigation bar includes 'Manage', 'Monitor', 'Search', and 'System'. The main content area shows the 'Test Burst' (ID=2620) interface. The 'References' tab is active, showing a list of references: 'BO Data Provider to Hyper', 'Burst BO Data Provider to Hyper', 'CSV Output - Data Provider', 'Sales Summary', 'Sales Summary Detail', 'Sales Summary Detail - Fiori Demo', 'Sales Summary Detail By state & Product', 'Schedule for Test Burst', and 'Test Burst'. A yellow callout points to the 'References' tab. The 'Referenced By' section shows a reference to 'Schedule for Test Burst'.

Dataprovider CSV option for multiple universe queries

Burst Delivery ●

Name: ✓ Enabled

Destination: Network Folder Format: Data Provider CSV Delivery Conditions

Format

- Data Provider CSV
- PDF
- Excel (.xlsx)
- Excel Data (.xlsx)
- Excel CSV
- HTML
- PNG
- Plain Text
- ✓ Data Provider CSV
- Tableau Hyper
- Tableau TDE
- Tableau Packaged Workbook
- Native

☐ Suppress Header

☐ Remove BOM

Select Data Provider(s) ?

Data Providers

- ✓ customer_product
- ✓ product_orders

Save Cancel

Tableau – New Features in ibTab

WebI Data Provider as Hyper

In our prior releases of InfoBurst, a Web Intelligence report tab was the only source for Hyper delivery. When the report had breaks or sorts duplicate records were created in Tableau. With Build 240, IbTab users can leverage the WebI data provider option to create hyper files out of universe queries. If the Web Intelligence report has multiple queries/data providers multiple hyper files will be delivered.

Burst Delivery

Name
My Delivery

☒ Enabled

Destination: Tableau Server
Format: Tableau Hyper
Delivery Conditions

Format
Tableau Hyper

☒ First Row Headers

Report Tab
Data Provider

Select Data Provider(s)

Data Providers

☒ customer_product
☒ product_orders

Universe query as
Tableau Hyper

Excel Download from Tableau workbooks

Selected worksheets from a Tableau workbook can be combined and excel output can be delivered. Post post processing extension such as Freeze panes can be added to Excel output from Tableau

Burst Delivery

Name
My Delivery

☒ Enabled

Destination: Network Folder
Format: Excel
Delivery Conditions

Format
Excel

Format list may change based on Destination

Views
☒ Sheet 1

1 Extension
AutoFit All Views

New Extension

Extension
AutoFilter

☒ AutoFilter
☐ Group
☐ AutoFit
☐ Freeze Panes

Select View(s)

Views
☒ Sheet 1

Tableau to Excel